

British Leyland UK Limited is constantly seeking ways to improve the specification, design, and production of its vehicles and alterations take place continually. While every effort is made to produce up-to-date literature, this Brochure should not be regarded as an infallible guide to current specification, nor does it constitute an offer for the sale of any particular vehicle. Distributors and Dealers are not agents of British Leyland UK Limited and have absolutely no authority to bind British Leyland UK Limited by any express or implied undertaking or representation.

# Rover 3500 colour and trim



**Leyland Cars**

**BRITISH LEYLAND UK LIMITED**

Grosvenor House, Redditch, Worcestershire B97 4DQ

*Printed in England*

*Publication No. 3206*

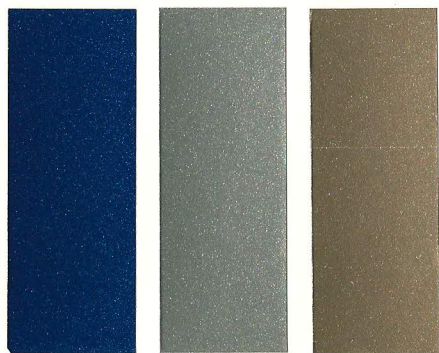
The illustrations of vinyl and nylon velour fabric trim materials used in the interior of the Rover 3500 are included as a guide only, since it is not possible to portray the exact colour and texture of trim material by normal printing process.

**Exterior Colour**   **Trim Colour**  
 (Seat contact surfaces are Nylon Velour Fabric)

Richelieu	Caviar or Coriander
Pendelican	Nutmeg or Caviar or Amontillado
Midas	Nutmeg or Caviar
Brazilia	Nutmeg or Coriander or Amontillado
Turmeric	Caviar or Coriander
Caribbean	Caviar or Coriander or Amontillado
Platinum	Nutmeg or Caviar

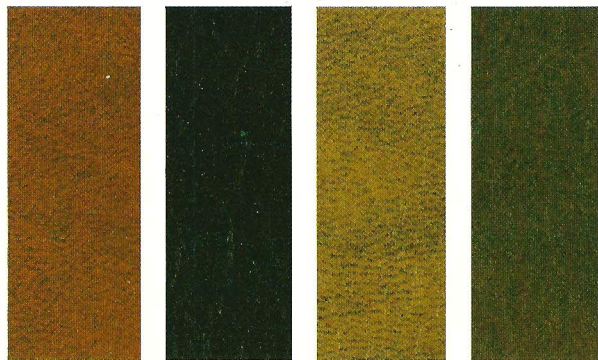


Richelieu   Pendelican   Brazilia   Turmeric

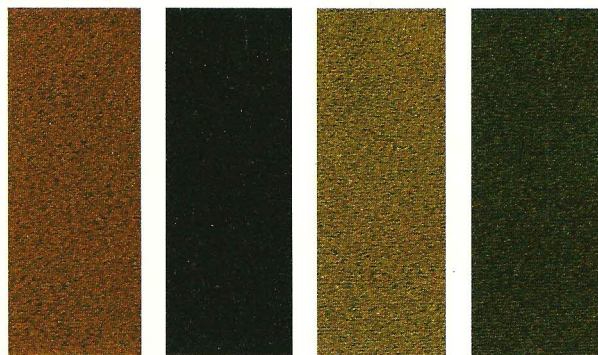


Caribbean   Platinum   Midas

*Vinyl*



*Nylon Velour*



Amontillado   Caviar   Coriander   Nutmeg